



# APRILIA DORSODURO 750 (2008 - 2009)

SLIP-ON STREEL LEGAL EXHAUST SYSTEM

Our sporty and lightweight SLIP-ON systems offer a great balance between price and performance and represent the first step in the exhaust system tuning process. The change will be also visual as our HEXAGONAL mufflers perfectly fit the exterior line of the sporty Dorsoduro and add a clean racing image.

The muffler outer sleeve is made of titanium, which gives a special hi-tech touch to our SLIP-ON system. We offer street legal version with removable muffler inserts.

**PERFORMANCE**

Measurements of the Akrapovic SLIP-ON system on the APRILIA DORSODURO 750 (without muffler insert):

Power & Torque: the exhaust system modification results in a major boost in performance, delivering a solid 84.8 HP at 9540 rpm on back wheel. But the increased power isn't available just at the top of the range; the system shows its quality already from 3500 rpm up through entire rpm range. Max. increased power between the Akrapovic and the stock system is 1.8 HP at 9300 rpm. Besides this, the torque is substantially higher in a lower rpm area from 2500 rpm to 6500, and also in middle and high rpm area.



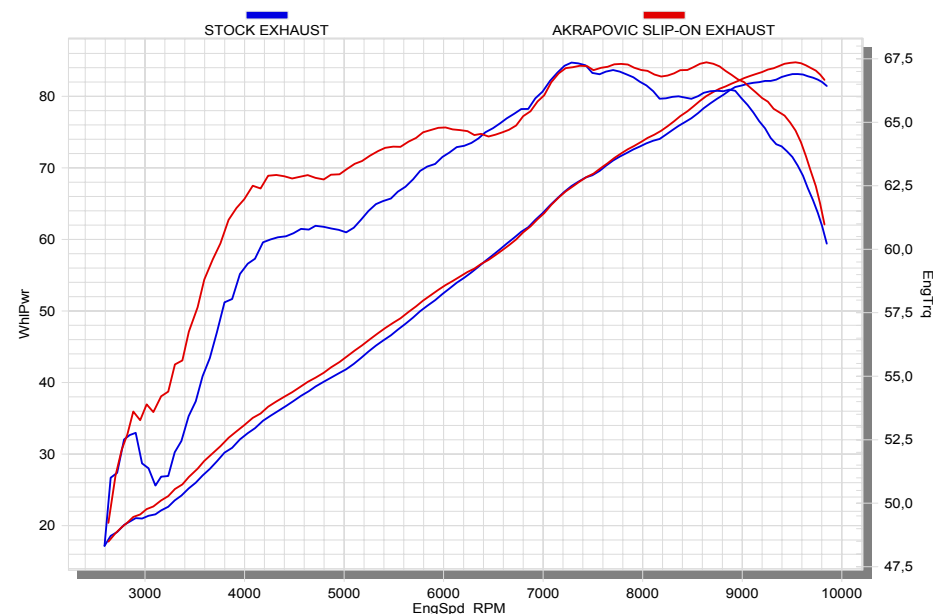
PERFORMANCE			
	stock	AKRAPOVIC	max. increased power
max. rear wheel power HP / rpm (measured on Dynojet ATV)	83.13 / 9560	84.8 / 9540	1.8 / 9300

ADDITIONAL DATA					
weight comparison (kg)	stock	AKRAPOVIC		difference	
	11.13	SS link pipe	TITANIUM link pipe	stock - S.S.	stock - TITANIUM
		4.35	-	6.78	-

noise measurements (dB / rpm)	stock	AKRAPOVIC
		96 / 4375
legal for street use	YES	

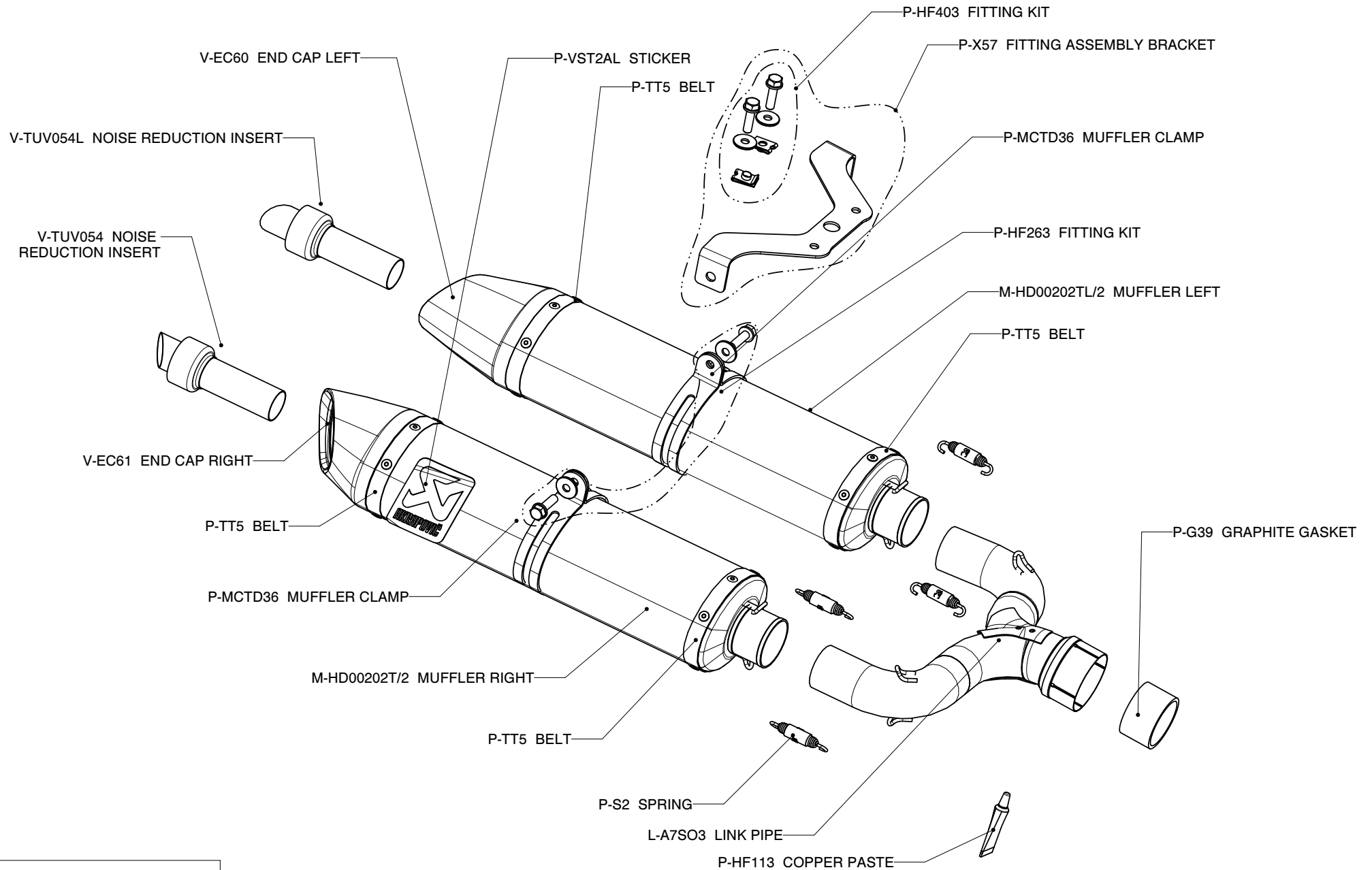
Technical specifications of Akrapovic exhaust systems and related products subject to change without notice.

Product code: (111206) S-A7SO2-HDT



# APRILIA DORSODURO, SLIP-ON exhaust system / EC Type approval

Product code: S-A7SO2-HDT



## MUFFLER REPAIR KITS

REPACK	P-RPCK27
SLEEVE	P-RKS254DT32

